

**MEMO COSTER D8: A Royal 'Haagseklok', App. 3, Open-Research.
Reviewed by Keith Piggott**

D8* Clock with striking; cartouche signed 'Salomon Coster Haghe Met privilege'. Special features: movement originally gilt; bell inside the case. Reference 1, 120; reference 2, 32-33 (Museum van het Nederlandse Uurwerk, Zaanse Schans. (refer Prof.Dr.Ir.Reinier Plomp, [The earliest DUTCH and FRENCH pendulum clocks, 1657-1662](#), 'Chronology', 13-3-2008).

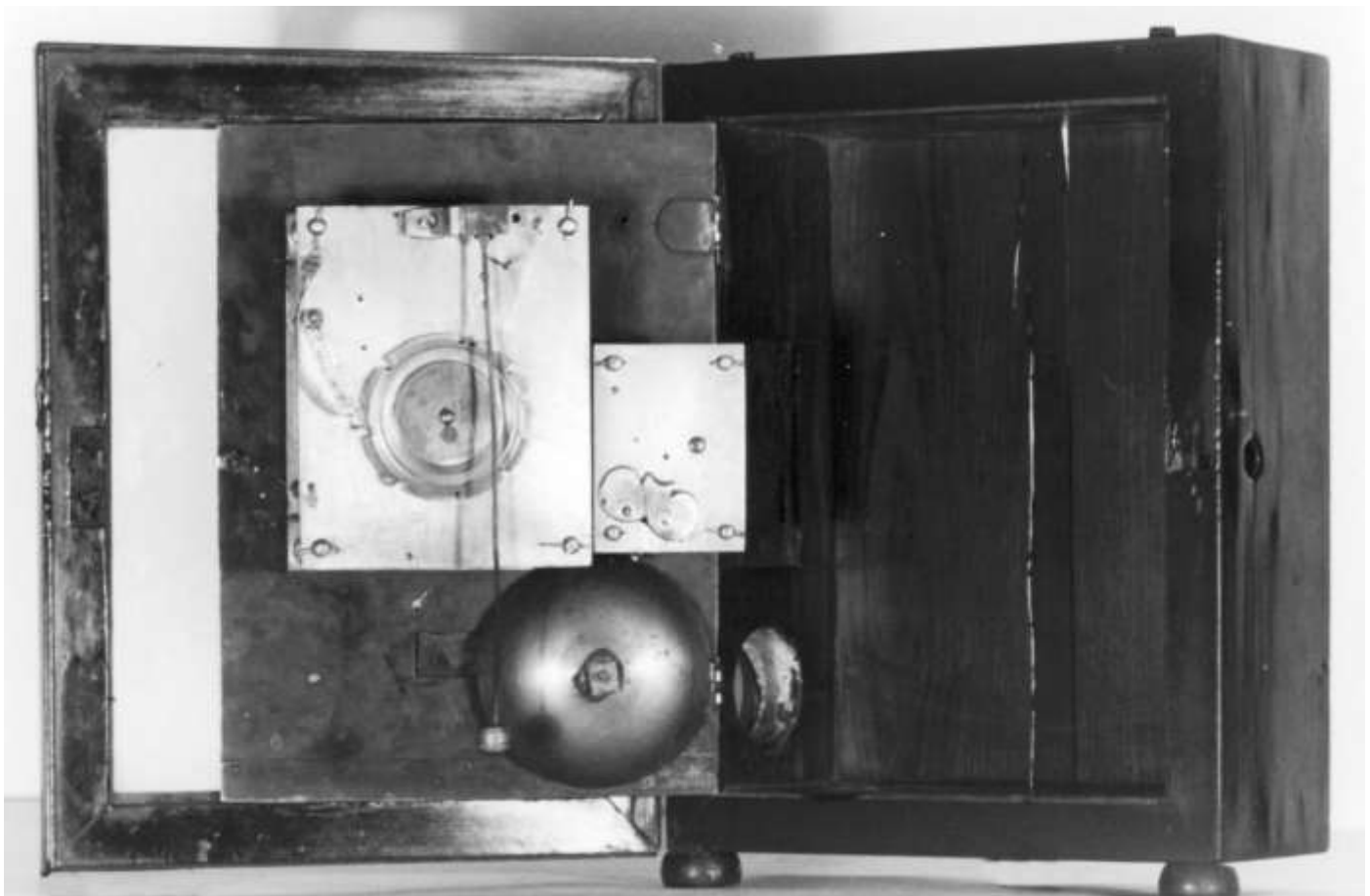
*Nb. in the Netherlands, 'D8' in Dr Plomp's chronology of his native pendulums is known as 'N8'.

Images, wheel trains, general dimensions, by courtesy of the *Museum van het Nederlandse Uurwerk, Zaanse Schaans (MNU)*, at *Zaandam*, with thanks in particular to Prof.C.A.'Kees' van Grimbergen and Karel Hofland, respectively the director and manager, for providing exemplary assistance essential to research, with images and details of this earliest extant Salomon Coster pendulum with *hour-strike*.

KP NOTES: COSTER 'D8', Salomon Coster's earliest extant Pendulum Striking-Clock, c.1658/9.

This author has not inspected the clock **D8** on the bench! However, I am indebted to the Museum van het Nederlandse Uurwerk (MNU) Zaandam, who provided images and trains; also to Michiel van Hees, for additional MNU images and data; and especially indebted to 'Berry' van Lieshout who opened his unique documentation of Coster D8 - compiled when the clock was discovered by the former Amsterdam dealer Geerd Wijnen in 1974/5, (Van Lieshout, **Archive**, #982, Doc.Nr. EA160284).

COSTER D8 AS FOUND: [<A1V15_D8found.jpg>](#)

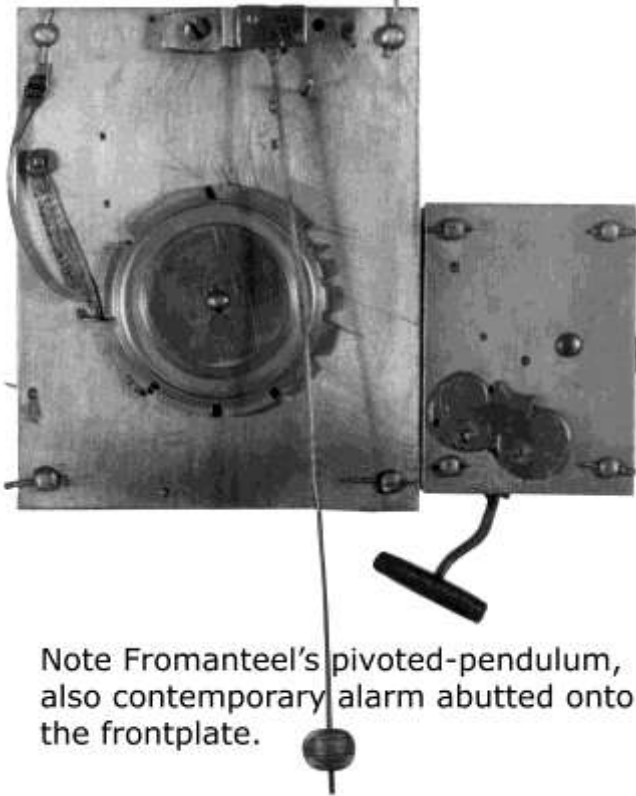


D8, EARLIEST COSTER PENDULUM WITH STRIKE, NEAREST COMPARABLE TO 'RH'. ALARUM APPEARS TO BE A CONTEMPORARY ADDITION, (cf. Plomp, "*Pendulums*", #84, by Severijn Oosterwijck'). Original images courtesy of Museum van het Nederlandse Uurwerk (NMU). Nb. Button feet, (and apparent lack of Hangers), attest to a later fashionable change, from a wall-clock to a table-clock; as also had happened to Severijn Oosterwijck's '*Royal Haagseklok*' - being first published as '*A Mantle Clock*' by Paul Shrouder in the '*Horological Journal*', (BHI, September 2008).

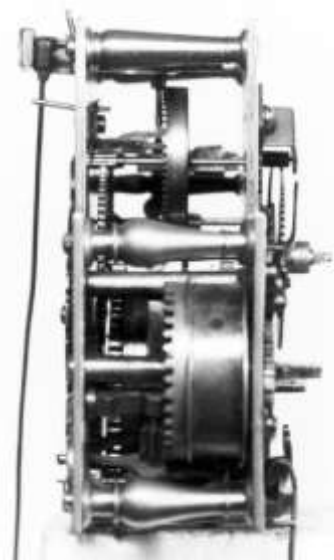
COSTER D8 AS FOUND:

[<A1V13_D8back.jpg>](#)

[<A1V12_D8alarm.jpg>](#)

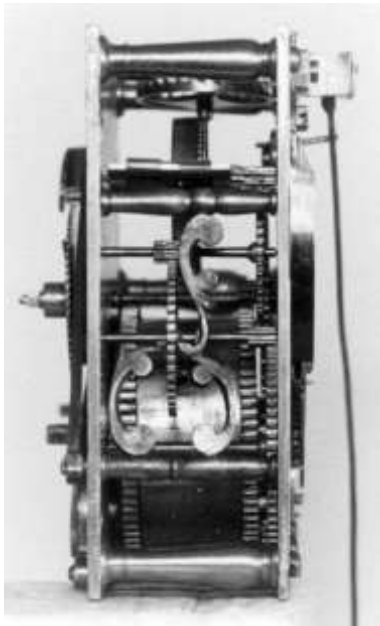


Note Fromanteel's pivoted-pendulum, also contemporary alarm abutted onto the frontplate.



Nb. The pivoted '*Fromanteel*' pendulum suggests a sometime English provenance; (see matted dial, spandrels, and alarum). Compare the movement's original '*club-like*' baluster pillars with added alarum's pronounced '*deeply-bellied*' pillars.

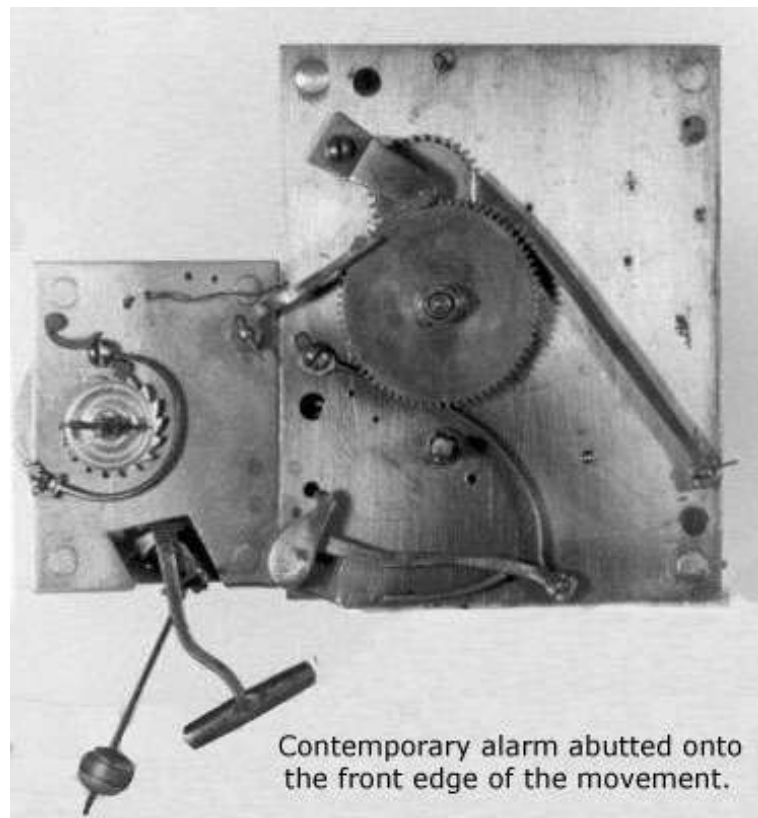
[<A1V10_D8gates.jpg>](#)



[<A1V11_D8front.jpg>](#)

COSTER D8 THE ALARUM APPEARS TO BE A CONTEMPORARY ADDITION. (Very different to Coster Timepiece-Alarum; Plomp D5)

Nb. The alarum-clapper is angled between the dial and the hour-bell behind the dial. The alarum is front-wound, through the dial-plate at VIII. The unusual mounting of the Alarum may well be unique, but it compares with the dial-mounted alarum by Severijn Oosterwijck, (see Plomp, "*Pendulums*" #84). In that hour-striking clock, which shares several features with Oosterwijck's very early striking clock, (Plomp D9, in the BoomTime Foundation), the bell-stand is mounted directly on the Alarum mechanism itself, having a single bell, mounted horizontally and acting for both the hour-strike and added alarum.

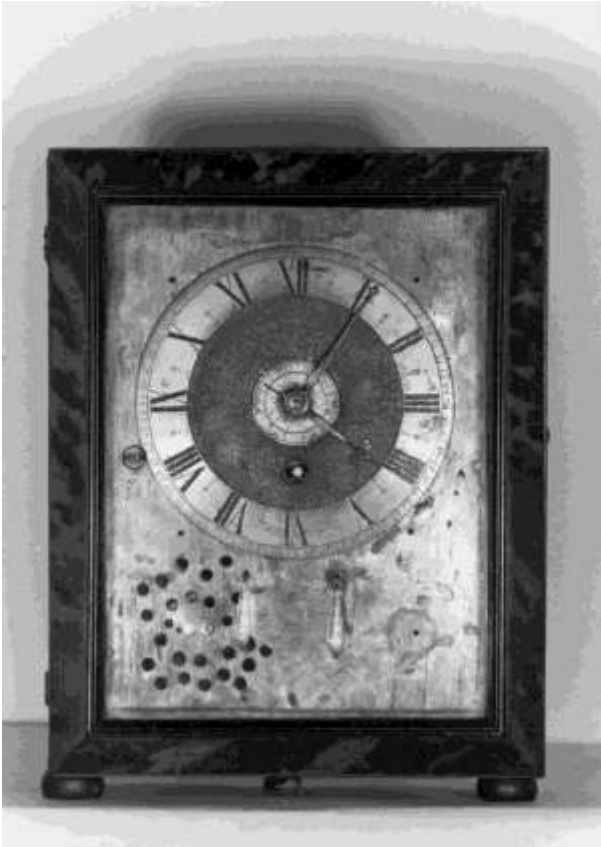


Contemporary alarm abutted onto the front edge of the movement.

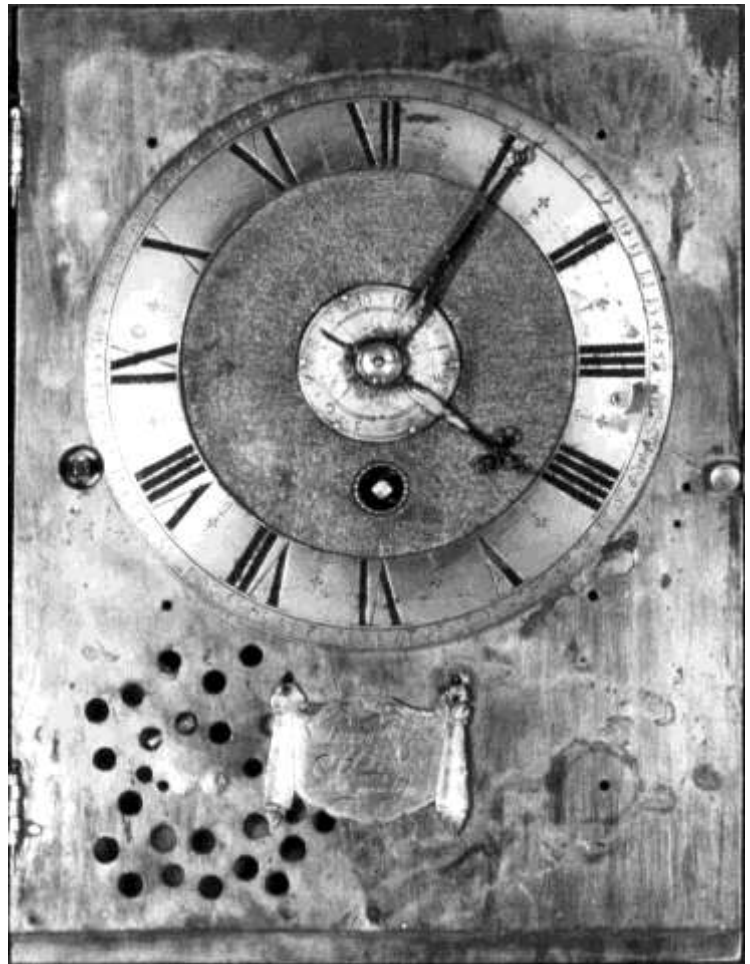
COSTER D8 AS FOUND:

[D8 Case](#) ↓

[D8 Dial](#) →



Original Tortoiseshell and Ebony Veneers.
Original Dial, Chapter-Ring, Shield, Hands.



Museum van het Nederlandse Uurwerk (N8)

Spandrels had been fitted. The dial centre-zone is matted. The original 'winder-grommet' is present. The brass dial is perforated around the internal, dial-mounted, hour-bell, to release sound of added alarum wound at 'VIII'. The case already had sound-holes, like Oosterwijck's '*Royal Haagseklok*' (RH), making perforations apparently superfluous - except that the alarm-clapper, (visible here within the bell), might well have been muffled. Dial perforations are not known in other Dutch strikers or alarums. Soon after discovery, this near-contemporary Alarum was removed. [*Wrongly, in my view, it being a valid part of this clock's history*]. Although of similar age to the movement, this unusual alarum is very different to Coster's earlier Timepiece (*Plomp D5*) with an original detached Alarum and Alarum-Disc. See below.

The dial-engravers' art in miniature

∅ mm © Cristies Images (2007)

Engr.

'Salomon Coster Haghe met privilegē 1638'
fitting: Roman hours, ↓ half-hours, ringed
centre without Quarters. 5 punch-marked studs
Refer to MemoCosterD5

∅ mm © MNU (1975)

Engr.

'Salomon Coster Haghe Met privilegē' c.1659
fitting: Arabic hours, ↓ half-hours, double-ring
without Quarters, centre 'petals'. nb. adjusted by knobs.
Contemporary alarum now removed; MemoCosterD8

Link to [MemoCosterD5](#) *Plomp D5*

Plomp D8 Link to Curiosa, [Alarums](#)

COSTER D8 - CONSERVED:
Tortoiseshell veneers as found.



GOING TRAIN:

Count 65/5x60/5x58/60 = 150.8 beats

Nominal Pendulum 15.8 cm

G4	Escape wheel	p.5 /	29 teeth	(spillerad/gangrad)
G3	Contrate-wheel	p.5 /	60 teeth	(kroonrad)
G2	Centre-wheel	p.6 /	65 teeth	(centrerad)
G1	First-wheel		72 teeth	(veertongangrad)

NB: First and Contrate common with RH

G2 Arbor tapers, a relief for front S1
G2 Pinion 6 Leaf. bears centre wheel mounted at the back plate

MOTION WORK:

Identical to Oosterwijck's above.

SPLIT-BARREL: Yes
Ratchet-wheel: Yes
Fixed onto the Barrel at front cap
Stop work: (to be examined)

STRIKE TRAIN:

S5	Fly (<i>windvleugel</i>)	p.6 / 2 vanes	[formerly p.5 Dr Van Grimbergen]
S4	Fourth (<i>slagrad</i>)	p.6 / 42 teeth	
S3	Warning (<i>voorslagrad</i>)	p.5 / 48 teeth	2 pins, domed-collet
S2	Pin (<i>pennenrad</i>)	p.8 / 60 teeth	
S1	First (<i>Veertonslagrad</i>)	72 teeth	

nb. S4 - Heavy Fly's unreduced open centre profile (cf. RH, and D10)
nb. S2 - 12 strike Pins with count-wheel Pinion of 12 leaves driving a centrally placed count-wheel. Oosterwijck's **RH** & **D9** have 10s.
nb. S1 - the strike mainwheel is planted on the front the of split-barrel

Strike Gates:

3 steel scrolls, 2 short,
Count-wheel 12 unequal slots I to XII.
Drive-wheel 78 teeth, Pinion of 12

Strike Work:

Layout and form are identical to the subject Royal Oosterwijck, but having 12 pins and a pinion of 12; the ubiquitous new 'standard'. Whereas, uniquely, Oosterwijck uses just 10 pins with a count wheel pinion of 10 leaves, thus inferring an earlier chronology in the evolution of Hague clock strike-work.

Comparing Going-trains:

Coster escapes	D3	5/27,	D8	5/29
Oosterwijck escape		5/27		
Coster contrates	D3	5/64,	D8	5/60
Oosterwijck contrate				5/60

Comparing Strike-trains:

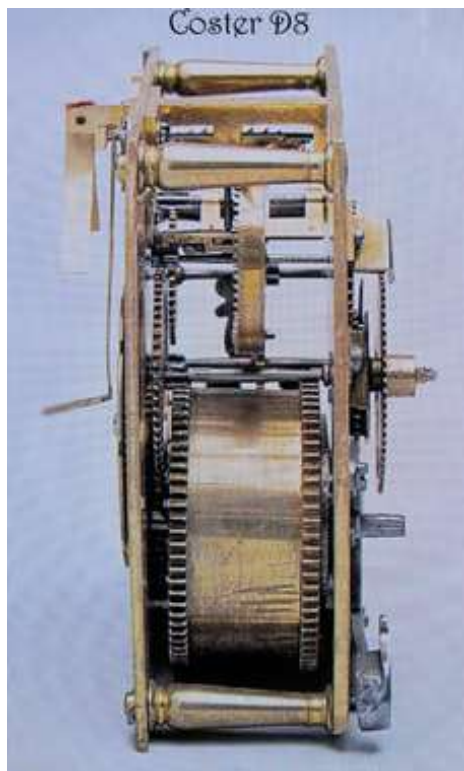
Coster D8 72-8/60-5/48-6/42-6?/Fly **Oosterwijck RH** 80-8/60-6/48-6/48-5/Fly

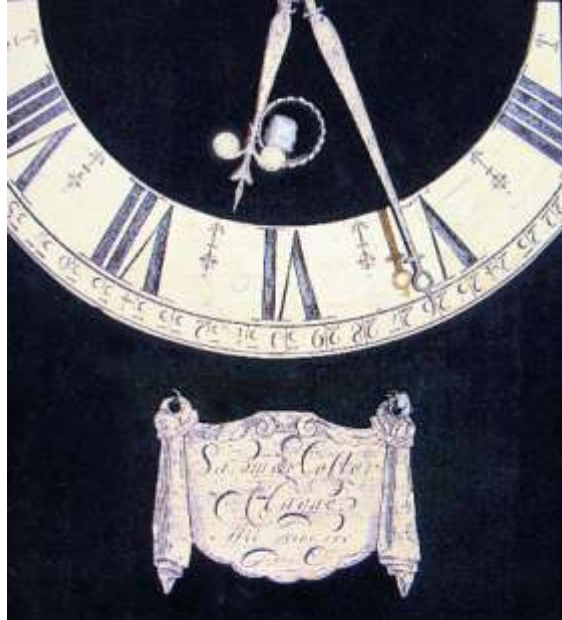
Oosterwijck **RH** and **D9** Strike trains having 10 Strike-Pins to 10 leaf Pinions appear to antedate Coster **D8**'s use of 12s that became the ubiquitous standard for Hague striking. I suggest that their chronology actually is determined by these hitherto unnoticed details.

Significant Pointers: Evidently, Hague clock trains were still evolving, but the similarities noted here cannot be merely random. Modern authorities say Coster did not make any of the square-pillar timepieces, so was he using Severijn Oosterwijck to make his strikers - based on Oosterwijck's '**RH**' prototype?

[A1V6 D8](#) ↑

↓ [A1V9 D8going](#)





<A1V8_D8dial.jpg>



<A1V7_D8strike.jpg>



<A1V14_D8back2.jpg>

On a number of construction details, I have made out a case for the *Royal Haagseklok* by Severijn Oosterwijck being the model and *prototype* for his *D9* also both Striking clocks bearing Salomon Coster's name (Plomp *D8* and *D10*), if not in fact made by Oosterwijck himself. I also assert that his *Royal Haagseklok* is also the model, (at least), for other striking clocks bearing signatures of Pieter Visbagh, Claude Pascal, and Nicolaes Hanet. Their significant similarities in layout of plates and movements (ébauches), show difference in added details that may distinguish their finishing hands.

<Compare RH and D8>

FRONTPLATE: RH



© Views courtesy : Keith Piggott

There is an evident similarity between these movements; in size, proportions, layout, pillar rivet-heads, tool marks.

D8's strike lifting-lever and hammer are repositioned slightly. Cut corner of the plate allows the bell to be set closer to hammer; which has springs above and below.

Oosterwijck D9 and Coster D10 adopt these new features.

Coster 'D8'



Museum van het Nederlandse Uurwerk